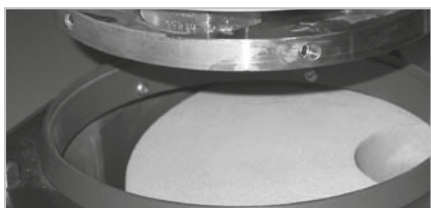




■ FACE GRINDING STONES FOR SAPHIR 375



Face grinding stone for system grinder

NAME	THICKNESS /mm	ARBOUR SIZE /mm	GRAIN FEPA-STANDARD	Ø/mm	INSIDE Ø/mm	ORDER NO.	€/PIECE	APPLICATION
SIC grinding stone	30 mm	40 mm	80	350	90	95002223		for sintered materials (low and unalloyed), aluminium, chilled cast iron, copper
white corundum grinding stone	30 mm	40 mm	100	350	90	95000180		for tool steel (hardened and not hardened), stainless steel, steel and malleable cast iron
			150	350	90	95000210		
			180	350	90	95002034		

» inner diameter 120 mm on request

NAME	ORDER NO.	€/PIECE	APPLICATION
multi point dressing diamond	92008759		for dressing face grinding stones



■ DIAMOND GRINDING FOILS, METAL BOUND

Ø/MM	GRAIN SIZE /µm	ORDER NO.	€/PIECE		CHARACTERISTICS/APPLICATION
			1 PIECE	DISCOUNT ≥ 3 PCS. ^{5%}	
200	20	92002289			 <ul style="list-style-type: none"> » self-adhesive » for plain and fine grinding of samples with high hardness » very long lasting
	40	92002292			
	74	92002293			
	125	92002294			
	250	92002295			
250	20	92002301			
	40	92002299			
	74	92002298			
	125	92002297			
	250	92002296			
300	20	92002308			
	40	92002306			
	74	92002305			
	125	92002304			
	250	92002303			

» delivery period on request

■ DIAMOND GRINDING FOILS, RESIN BOUND

Ø/MM	GRAIN SIZE /µm	ORDER NO.	€/PIECE		CHARACTERISTICS/APPLICATION
			1 PIECE	DISCOUNT ≥ 3 PCS. ^{5%}	
200	10	92002290			<ul style="list-style-type: none"> » self-adhesive » for plain and fine grinding of samples with high hardness » very long lasting
	30	92002291			
250	10	92002302			
	30	92002300			
300	10	92002309			
	30	92002307			

■ ZIRCONIA ALUMINIUM OXIDE GRINDING PAPERS

Ø/mm	GRAIN FEPA-STANDARD	ORDER NO.	€/UNIT		CHARACTERISTICS/APPLICATION
			1 UNIT (25 PCS.)	DISCOUNT ≥ 4 U. (100 PCS.) ^{10%}	
200	60	92002374			<ul style="list-style-type: none"> » self-adhesive » for plain grinding of samples with large cross section area » powerful removal function » long lasting
	120	92002375			
	180	92002376			
250	60	92002382			
	120	92002383			
	180	92002384			
300	60	92002386			
	120	92002387			
	180	92002388			

■ GALAXY GRINDING DISCS



Galaxy grinding discs

cleaning with cleaning brush

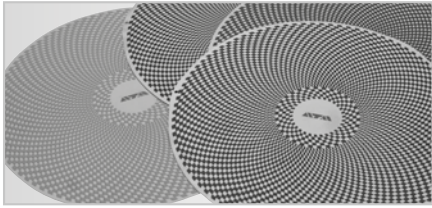
Ø/mm	NAME	FIXATION	ORDER NO.	€/PIECE	CHARACTERISTICS/APPLICATION
250	Galaxy 30	ADHESIVE CARRIER	92008538		<p>The helical pattern and the metal base create an exceptional plane surface also on materials with different hardness. A special coating guarantees a constant cutting quality, high removal performance and a long life.</p> <p>Compared to customary systems, the grinding time can be considerably reduced.</p>
		MAGNETIC	92008542		
	Galaxy 120	ADHESIVE CARRIER	92008539		
		MAGNETIC	92008543		
300	Galaxy 30	ADHESIVE CARRIER	92008540		<p>Use the Galaxy 120 to pre-grind and take away a large quantity of debris in a short time. For normal grinding, the removal achieved with the Galaxy 30 is sufficient. Including dressing stone and cleaning brush.</p>
		MAGNETIC	92008544		
	Galaxy 120	ADHESIVE CARRIER	92008541		
		MAGNETIC	92008545		

■ GRINDING AND POLISHING CHART FOR GALAXY GRINDING DISCS

BASE	GALAXY 120	GALAXY 30	POLISHING CLOTH ALPHA	POLISHING CLOTH GAMMA	POLISHING CLOTH ZETA	POLISHING CLOTH OMEGA	CHARACTERISTICS/APPLICATION
addition	water	water	diamond susp. 9 µm	diamond susp. 3 µm	diamond susp. 1 µm	Eposal	<p>All specifications refer to following adjustments:</p> <p>speed working wheel: 150 rpm</p> <p>speed polishing head: 125 rpm</p> <p>synchronized operation/central pressure</p>
cast iron (GGG)							
time	–	1 min	5 min	–	–	1.5 min	
pressure	–	75 N	175 N	–	–	125 N	
carbon steel e.g. C60							
time	–	1 min	5 min	–	–	1.5 min	
pressure	–	125 N	175 N	–	–	125 N	
hard metal							
time	–	1 min	5 min	5 min	–	–	
pressure	–	150 N	175 N	125 N	–	–	
ceramics							
time	–	2 min	5 min	5 min	3 min	–	
pressure	–	150 N	175 N	125 N	125 N	–	
tool steel HSS							
time	1 min	1 min	5 min	–	–	1.5 min	
pressure	150 N	150 N	175 N	–	–	125 N	



■ GALAXY GRINDING AND POLISHING DISCS



The ATM Galaxy-System consists of six different grinding discs.

Every single grinding step is harmonized.

The Galaxy-System is suitable from pre-grinding to polishing of different materials.

Appropriate for manual, semi-automatic and automatic preparation, or for use with the ATM Systemautomat.

Grinding

Ø/mm	NAME	FIXATION	ORDER NO.	€/PIECE			CHARACTERISTICS/APPLICATION
				1 PIECE	DISCOUNT ≥ 3 PCS. 6%	DISCOUNT ≥ 5 PCS. 12%	
200	Galaxy Red	ADHESIVE CARRIER	95005521				» considerably reduced grinding time compared to conventional grinding systems » coarse pre-grinding: red » plane grinding: green/blue » fine-grinding: yellow
	Galaxy Green		95005522				
	Galaxy Blue	MAGNET	95005523				
	Galaxy Yellow		95005524				
250	Galaxy Red	ADHESIVE CARRIER	95004310				
	Galaxy Green		95004311				
	Galaxy Blue	MAGNET	95004312				
	Galaxy Yellow		95004313				
300	Galaxy Red	ADHESIVE CARRIER	95004314				
	Galaxy Green		95004315				
	Galaxy Blue	MAGNET	95004316				
	Galaxy Yellow		95004317				

■ APPLICATIONS FOR GALAXY GRINDING DISCS

µm	125			46			26			15
FEPA	80	120	180	240	320	400	500	600	800	1000
Galaxy	RED		GREEN			BLUE			YELLOW	
	120		30							
Ra* µm	1		0.3			0.07			0.05	

* approx. achievable surface roughness by using water and suspension

■ SILICONE CARBIDE GRINDING FOILS

Ø/mm	GRAIN FEPA-STANDARD	ORDER NO.	€/UNIT (100 PCS.)	CHARACTERISTICS
200	120	92008594		» very plane grinding » optimally suitable for adhesive carrier system » multiple use » easy handling without clamping ring
	320	92008592		
	600	92008591		
	1200	92008596		
250	120	92008557		
	240	95000899		
	320	92006305		
	600	92006304		
	800	95000900		
	1200	92008559		
300	120	92008561		
	240	95000902		
	320	92006303		
	600	92006302		
	800	95000903		
	1200	92008562		

» other dimension (e.g. Ø 230 mm) and grain on request

■ ADHESIVE CARRIER, DOUBLE-SIDED



Ø/mm	ORDER NO.	€/1 PIECE	CHARACTERISTICS
200	95003781	on request	» adhesive on both sides, reusable » suitable for all fixing systems (standard, magnetic) » no glue residues
250	95003607		
300	95003608		

NEW

» before initial use please remove protective foil on both sides

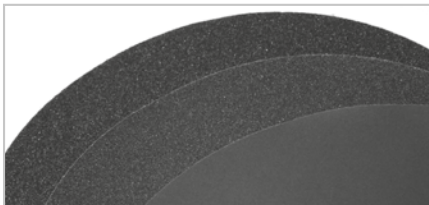
■ CORUNDUM GRINDING FOIL BLUE

Ø/mm	GRAIN FEPA-STANDARD	ORDER NO.	€/1 UNIT (100 PCS.)	CHARACTERISTICS/APPLICATION
250	800	95002903		» suitable for system automat » very high durability » especially suited for aluminium preparation
	2500	95003680		
300	120	92008672		
	240	92008673		
	400	92008674		
	600	92008675		
	800	95003258		
	1200	92008676		
	2500	95003259		

» delivery period on request

» other grain for Ø 250 mm on request

■ SILICONE CARBIDE WET GRINDING PAPERS



plain back

Ø/MM	GRAIN FEPA-STANDARD	ORDER NO.	€/UNIT		
			1 UNIT (100 PCS.)	DISCOUNT ≥ 5 UNITS (500 PCS.) (5%)	DISCOUNT ≥ 10 UNITS (1000 PCS.) (10%)
200	60	92001810			
	80	92001811			
	120	92001812			
	180	92001813			
	240	92001814			
	320	92001815			
	400	92001816			
	500	92001817			
	600	92001818			
	800	92001819			
	1000	92001820			
	1200	92001821			
	2400	92002634			
	2500	92004557			
4000	92002640				

» without adhesive back

» self-adhesive grinding papers on request (minimum order 500 pieces)

» bigger diameter see next page

■ SILICONE CARBIDE WET GRINDING PAPERS

Ø/MM	GRAIN FEPA-STANDARD	ORDER NO.	€/UNIT		
			1 UNIT (100 PCS.)	DISCOUNT ≥ 5 UNITS (500 PCS.) (5%)	DISCOUNT ≥ 10 UNITS (1000 PCS.) (10%)
250	60	92001580			
	80	92001581			
	120	92001582			
	180	92001583			
	240	92002369			
	320	92001585			
	400	92001586			
	500	92001587			
	600	92001588			
	800	92001589			
	1000	92001590			
	1200	92001591			
	2400	92002636			
	2500	92004559			
4000	92001592				

300	60	92001593			
	80	92001594			
	120	92001595			
	180	92001596			
	240	92001597			
	320	92001598			
	400	92001599			
	500	92001600			
	600	92001601			
	800	92001602			
	1000	92001603			
	1200	92001604			
	2400	92002637			
	2500	92004560			
4000	92002154				

- » without adhesive back
- » self-adhesive grinding papers on request (minimum order 500 pieces)
- » Ø 230 mm on request

■ DOUBLE-SIDE ADHESIVE FOILS

Ø/mm	ORDER NO.	€/UNIT		APPLICATION
		1 UNIT (5 PCS.)	DISCOUNT ≥ 4 UNITS (20 PCS.) ^{5%}	
200	92002522			for grinding papers
250	92002524			
300	92002525			

■ WET GRINDING PAPERS FOR SAPHIR 300 (MOBILE GRINDER AND POLISHER)

NAME Ø/mm	GRAIN FEPA- STANDARD	ORDER NO.	€/UNIT			CHARACTERISTICS
			1 UNIT (100 PCS.)	DISCOUNT ≥ 5 UNITS (500 PCS.) ^{5%}	DISCOUNT ≥ 10 UNITS (1000 PCS.) ^{10%}	
corundum 30	60	92004285				with velcro fastening back
	180	92004286				
	240	92004288				
	320	92004287				
silicone carbide 30	400	92004498				with adhesive back
	600	92004499				
	1000	92004631				

» all polishing cloths also available with Ø 30 mm

■ GRINDING BELTS



Grinding belts

NAME	DIMENSIONS /mm	GRAIN FEPA- STANDARD	ORDER NO.	€/UNIT		CHARACTERISTICS
				1 UNIT (10 PCS.)	DISCOUNT ≥ 2 UNITS (20 PCS.) ^{5%}	
corundum	100 x 920	80	92002528			water resistant
		120	92002529			
		180	92002530			
		240	92002531			
		320	92004505			
	100 x 915	80	92002953			
		120	92002954			
silicone carbide	100 x 915	80	92002664			water resistant
		120	92002665			
		180	92002666			
		240	92002667			
		320	92004613			
	100 x 915	400	92002394			
		500	92002395			
	120 x 915	80	92002668			
		120	92002669			

■ DIAMOND SUSPENSION MONOCRYSTALLINE



COLOUR CODE	
Blue	1 µm
Green	3 µm
Yellow	6 µm
Red	9 µm

WATER FREE PREPARATION
 Diamond suspensions mono- and polycrystalline alcohol or oil based on request.

UNIT	GRAIN SIZE /µm	ORDER NO.	€/PIECE		CHARACTERISTICS
			1 PIECE	DISCOUNT ≥ 3 PCS. ^{5%}	
250 ml	1	92002346			water based (non polluting) » closely tolerated grain size » high diamond concentration » high removal rate
	3	92002347			
	6	92002348			
	9	92002349			
400 ml	1	92001725			
	3	92001727			
	6	92001728			
	9	92001733			
1000 ml	1	92004791			
	3	92004792			
	6	92004793			
	9	92004794			
2500 ml	1	95002755			
	3	95002756			
	6	95002757			
	9	95002758			

» other grain size on request

■ DIAMOND SUSPENSION POLYCRYSTALLINE

UNIT	GRAIN SIZE /µm	ORDER NO.	€/PIECE		CHARACTERISTICS
			1 PIECE	DISCOUNT ≥ 3 PCS. ^{5%}	
250 ml	1	92002353			water based (non polluting) » closely tolerated grain size » high diamond concentration » high removal rate
	3	92002354			
	6	92002355			
	9	92002356			
400 ml	1	92002592			
	3	92002593			
	6	92002594			
	9	92002595			
1000 ml	1	92004798			
	3	92004799			
	6	92004800			
	9	92004801			
2500 ml	1	95002761			
	3	95002762			
	6	95002763			
	9	95002764			

» other grain size on request



■ DIAMOND LUBRICANT

NAME	ORDER NO.	UNIT	€/L	CHARACTERISTICS
diamond lubricant	92005509	1 L bottle		water based (non polluting)
		5 L can ^{3%}		

WATER FREE PREPARATION 

Diamond lubricant alcohol or oil based on request.

■ DIAMOND SPRAY

NAME/UNIT	GRAIN SIZE / μm	ORDER NO.	€/PIECE		CHARACTERISTICS
			1 PIECE		
diamond spray polycrystalline 150 ml	1	95005380			» CFC free » very high diamond concentration » closely tolerated grain size » high removal rate
	3	95005381			
	6	95005382			
	9	95005383			

■ DIAMOND PASTE

NAME/UNIT	GRAIN SIZE / μm	ORDER NO.	€/PIECE		CHARACTERISTICS
			1 PIECE	DISCOUNT ^{5%} ≥ 3 PCS.	
diamond paste monocrystalline 10 g syringe	1	92002333			» very high diamond concentration » closely tolerated grain size » high removal rate
	3	92002316			
	6	92002335			
	9	92002336			
diamond paste polycrystalline 10 g syringe	1	92002340			
	3	92002341			
	6	92002342			
	9	92002343			

» 15 μm on request

■ ALUMINA

NAME/UNIT	GRAIN SIZE / μm	ORDER NO.	€/PIECE		CHARACTERISTICS
			1 PIECE	DISCOUNT ^{5%} ≥ 3 PCS.	
alumina 1	0.6	92002532			aqueous concentrate, to dilute
alumina 2	0.3	92002533			
alumina 3	1	92004950			

■ FINE POLISHING SUSPENSION

NAME	GRAIN SIZE / μm	ORDER NO.	UNIT	€/PIECE		CHARACTERISTICS/APPLICATION
				1 PIECE	DISCOUNT ^{5%} ≥ 3 PCS.	
Eposal	0.06	92002534	1 L			fine polishing suspension (Al_2O_3) » does not crystallize out
Eposil F	0.1	92002536	1 L			colloidal silica » for polishing also mixable with diluted etchant
Eposil M	0.06	92002541	1 L			
Eposil M11	0.06	95001206	1 L			colloidal silica » for titanium, nickel, zinc and alloys
NEW Etosil E	0.06	95005033	1 L			» water free fine polishing suspension, for magnesium, tin



■ POLISHING CLOTHS



NAME.	Ø/mm	ORDER NO.	FIXATION	€/UNIT		CHARACTERISTICS	APPLICATION
				1 UNIT (5 PCS.)	DISCOUNT ≥ 5% 2 U. (10 PCS.)		
A Alpha	200	92002555	SELF-ADHESIVE			very hard, perforated chemotextile cloth, » long lasting, high removal rate » ceramics, hard metal, steel, cast iron, aluminium, plastics-dodgy	
	250	92002564					
	300	92002573					
	200	95001469	MAGNETIC				25/15/9 µm
	250	95001470					
	300	95001471					
B Beta	200	92005678	SELF-ADHESIVE			hard chemotextile cloth » hard metal, minerals, ceramics, titanium, tantalum	
	250	92005679					
	300	92005680					
	200	92008798	MAGNETIC				15/9/6 µm
	250	92008799					
	300	92008800					
Γ Gamma	200	92002558	SELF-ADHESIVE			medium hard silk cloth » c-steels, non-ferrous metals, coatings, plastic (GPR, CFK)	
	250	92002567					
	300	92002576					9/6/3 µm
Σ Sigma	200	92008810	SELF-ADHESIVE			soft woolen cloth » for all materials	
	250	92008811					
	300	92008812					
	200	92008813	MAGNETIC				6/3/1 µm
	250	92008814					
	300	92008815					
Δ Delta	200	92008801	SELF-ADHESIVE			medium hard silk cloth » c-steels, precious metal, coatings, plastics, aluminium	
	250	92008802					
	300	92008803					
	200	92008804	MAGNETIC				9/6/3 µm
	250	92008805					
	300	92008806					
E Epsilon	200	92004411	SELF-ADHESIVE			short nap, medium hard synthetic cloth » for all medium and very hard materials	
	250	92004412					
	300	92004413					3/1 µm
I Iota	200	95002393	SELF-ADHESIVE			short nap, soft synthetic cloth » for all materials » particularly suitable for Ti, Ni-materials	
	250	95002394					
	300	95002395					
	200	95002396	MAGNETIC				3/1 µm
	250	95002397					
	300	95002398					

» all polishing cloths also available for Saphir 300 (Ø 30 mm)

» more cloths see next page

pre polishing

final polishing

diamond suspensions

oxide suspensions



■ POLISHING CLOTHS

NAME.	Ø/mm	ORDER NO.	FIXATION	€/UNIT		CHARACTERISTICS	APPLICATION
				1 UNIT (5 PCS.)	DISCOUNT ≥ 2 U. (10 PCS.)		
Z Zeta	200	92005681	SELF-ADHESIVE			short nap, soft synthetic cloth » for all materials	
	250	92005683					
	300	92005684					
	200	92008807	MAGNETIC				» 3/1 µm
	250	92008808					
	300	92008809					
K Kappa	200	92002563	SELF-ADHESIVE			soft felt cloth	
	250	92002572					
	300	92002581					
Ω Omega	200	92002562	SELF-ADHESIVE			soft, porous synthetic cloth (chemical resistant) » for all materials	
	250	92002571					
	300	92002580					
	200	92008816	MAGNETIC				
	250	92008817					
	300	92008818					

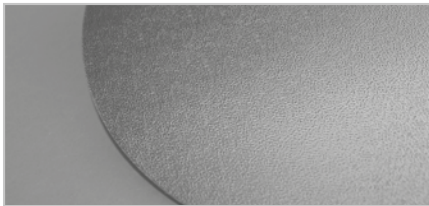
» all polishing cloths also available for Saphir 300 (Ø 30 mm)

final polishing diamond suspensions

alumina

oxide suspensions

■ POLISHING CLOTH CARRIER DISCS



Ø/MM	ORDER NO.	€/PIECE	APPLICATION
200	05610121		for adhesive carrier
250	05610123		
300	05610124		

200	05610206		for magnetic system
250	05610208		
300	05610209		

» other diameter on request

■ MAGNETIC FOIL (SELF-ADHESIVE)

Ø/MM	ORDER NO.	€/PIECE
200	92008528	
250	92008520	
300	92008522	

» other diameter on request



■ ELECTROLYTES

NAME	UNIT	ORDER NO.	€/UNIT	CHARACTERISTICS/APPLICATION
K1	1 L	92002680		electrolyte for stainless steel, aluminium, aluminium alloys and special materials » for electrolytic etching/polishing – Kristall 620

» download of security advices at www.atm-m.com (> products > consumables)

» additional fees can be necessary by shipping of hazardous materials

■ ETCHANTS

NAME	UNIT	ORDER NO.	€/UNIT	APPLICATION
Copper ammonium chloride according to Heyn	1 L	92002601		steel, phosphorous segregations, macro etching, copper alloys, brass
Etchant according to Adler	1 L	92002602		steel, welded connections, macro etching
Alcoholic picric acid, 4% Picral	1 L	92002603		steel, martensite
Alcoholic nitric acid, 3% Nital	1 L	92002597		unalloyed and low alloyed steels
Alcoholic nitric acid, 1% Nital	1 L	92002596		unalloyed and low alloyed steels
V2A-etchant (stainless steel)	1 L	92002605		austenitic steels
Dr. Vogel's etchant	250 ml	92002606		etching additive for V2A-etchant
Sodium hydroxide solution	1 L	92002678		aluminium alloys
Etchant according to Oberhoffer	1 L	92004240		steel, macro/micro etching
Etchant according to Kroll	1 L	92004492		aluminium alloys
Etchant according to Fry	1 L	92004493		steel, macro/micro etching
Ferronitrate 10% aqueous	1 L	92004222		copper, copper alloys
Sodium picrate	1 L	92002750		cementite detection in steel
Etchant according to Kalling2	1 L	95002347		nickel, nickel alloys, stainless steels, nickel-copper alloys
Etchant according to Murakami	1 L	95002408		hard metals, molybdenum/chromium alloys, tungsten and tungsten alloys

» download of security advices at www.atm-m.com (> products > consumables)

» shipment of dangerous goods conditionally